



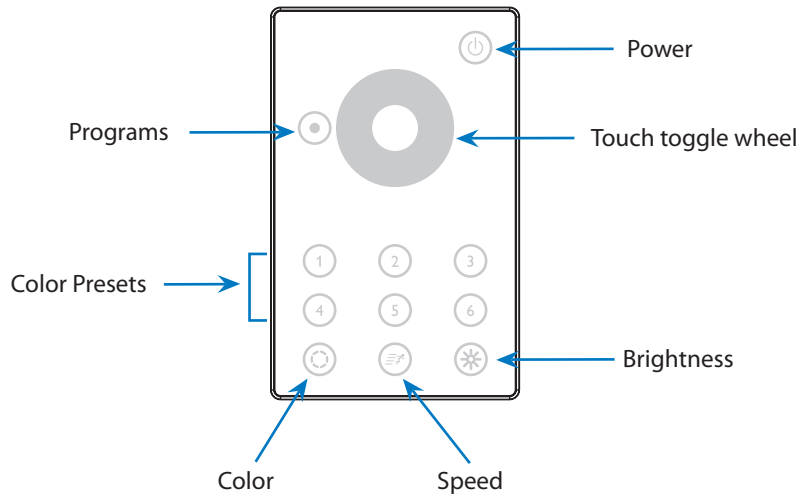
Vaya Touch Controller

User Guide

- Getting Started with Vaya Touch Controller
- Typical Vaya Touch Installation
- Power On/Off
- Function Modes
- Color Mode
- Program Mode
- Technical Specifications

Getting Started with Vaya Touch

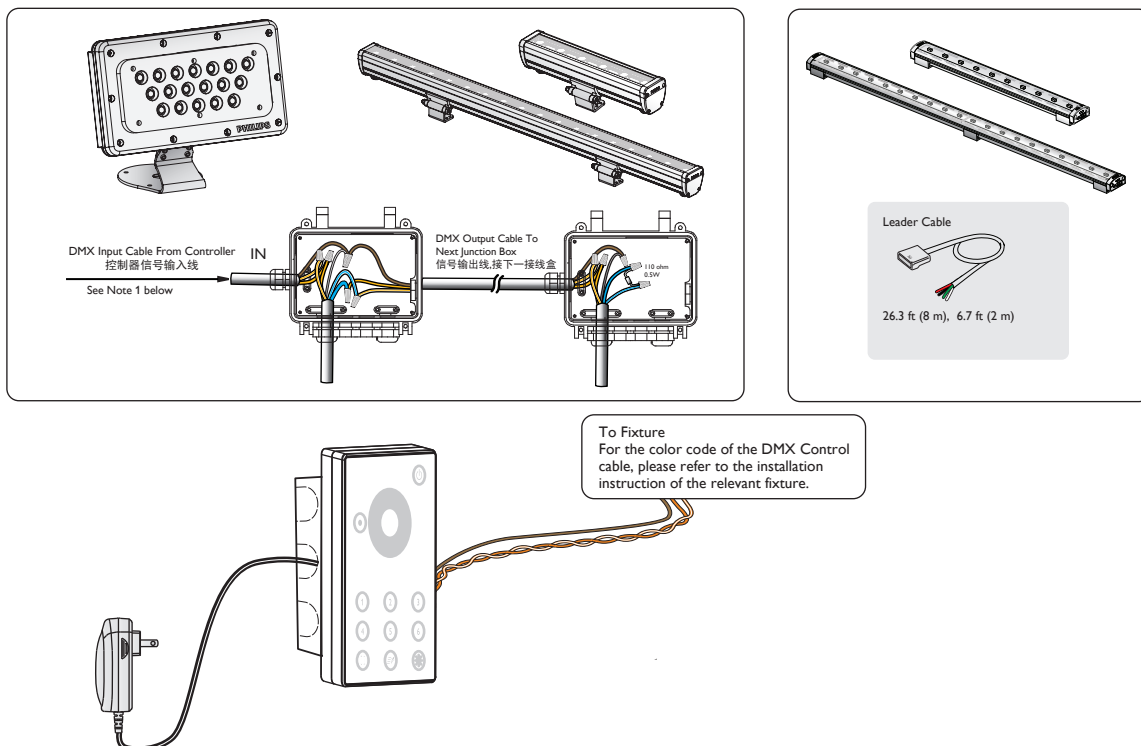
Color Kinetics Vaya Series Vaya Touch is a standalone DMX512 controller designed for use with LED lighting fixtures. With Vaya Touch you can select from six pre-set colors, select the color of your choice, or select from six dynamic sequences (Programs). In addition, there are six brightness presets for each color or program and six speed levels for the program's color-changing light shows. The toggle wheel lets you seamlessly select a custom color or brightness. The custom color can be stored in one of the six memory presets.



The actual color displayed on the fixtures is indicated in the center of the toggle wheel so you do not need to see the luminaires to set colors or know the colors being displayed.

Typical Vaya Touch Installation

A typical installation includes one Vaya Touch Controller connected to multiple Vaya RGB fixtures. Connect the Vaya Touch Controller to the DC power adapter. The Power button will light up to show the controller is ready for use. Connect up to 32 DMX512-controlled fixtures directly to the unit – or more using a DMX512 opto-splitter.







Power On/Off

Turn the controller on/off by holding the Power button for 2 seconds.

Function Modes

Enter any function mode by touching the function key:

-  Programs (dynamic color sequences)
-  Color
-  Speed
-  Brightness

When entering a function mode, the six option buttons start to flash, prompting you to select one of six pre-sets.

Color Mode

Press Color, then chose from the following pre-sets. You can adjust the brightness level of the static color display by pressing and holding Brightness and selecting one of the following intensity settings:

Mode	Color (C)	Brightness (B)
<i>Pre-set</i>	<i>Press Color, then select:</i>	<i>Press Brightness, then select:</i>
1	Red	10%
2	Green	20%
3	Blue	30%
4	Cyan (Green+Blue)	50%
5	Magenta (Red+Blue)	80%
6	White (Red+Green+Blue)	100%

Custom colors can be set in Color Mode by moving along the toggle wheel and fine-tuning the RGB values. When you have adjusted the right color, you can save it to one of the six memory buttons (1-6) by holding the selected key for 2 seconds. The buttons will light up to confirm the color has been successfully saved.

Intensity levels can also be manually adjusted by entering the Brightness Mode and, after selecting a starting intensity level (1-6), move along the toggle wheel until you reach the desired brightness setting. This brightness setting will be active for all subsequent Color Modes and Program Modes until a new intensity level is selected.

Program Mode

Press the Program button, then chose from the six following pre-sets. You can adjust the brightness level and speed of the dynamic sequence by pressing Brightness or Speed, followed by selecting one of the following intensity/speed settings:

Mode	Programs (P)	Brightness (B)	Speed (S)
<i>Pre-set</i>	<i>Press Programs, then select:</i>	<i>Press Brightness, then select:</i>	<i>Press Speed, then select:</i>
1	Red → Green → Blue	10%	30min
2	Red → Off → Green → Off → Blue → Off	20%	10min
3	Amber → Cyan → Magenta	30%	2.5min
4	Amber → Off → Cyan → Off → Magenta	50%	30sec
5	Red → Off → Amber → Off → Green → Off → Cyan → Off → Blue → Off → Magenta → Off	80%	6sec
6	Red → Off → Amber → White → Cyan → Blue → Cyan → Green → Off → Amber → Magenta → Off	100%	2sec

Lock Function

The controller can be "locked" by pressing the Program button for 2 seconds. When locked, all other buttons will be disabled. Only the Power and Program button remain active. To "unlock" the controller, hold the Program button again for 2 seconds.

Factory Default

The controller will dim down the backlight after an idle time of 1 minute. All saved Colors and last active Brightness setting will be stored when the controller is switched off and recalled when the unit is powered on again. To restore the factory settings, hold the Power button for 10 seconds.

Technical Specifications

Dimensions (LxWxH)	76mm x 120mm x 15.5mm
Power	DC 12-24V
Housing	Polycarbonate, Glass
Operation Temperature	32°F ~ 104°F (0°C ~ +35°C)
Storage Temperature	-4°F ~ 158°F (-20°C ~ +70°C)
Weight	5.3oz (150g)
Output	One DMX512 Universe outputting three RGB channels (no animated effects) <ul style="list-style-type: none">• Red channel controls DMX512 dimmers 1, 4, 7...• Green channel controls DMX512 dimmers 2, 5, 8...• Blue channel controls DMX512 dimmers 3, 6, 9...