

Quick Play Pro 2.0 Beta Release

Quick Start Guide

- 1** About Quick Play Pro 2.0 Beta Release
- 2** System Requirements
- 3** Configure Static IP Address
- 4** Using Quick Play Pro 2.0

1 About Quick Play Pro 2.0 Beta Release

QuickPlay Pro 2.0 is a multi-feature lighting system software that allows you to configure, test, and demonstrate lighting systems from your Windows PC or Mac. This Beta release of the software includes the following features new to Quick Play Pro 2.0.

N-Ch Effect Support

Quick Play Pro 2.0 now supports 4-channel luminaires (RGBW/RGBA/IntelliHue/iW).

New User Interface

Revamped UI including a more robust Test Channel interface.

New Protocol and Product Support

Quick Play Pro 2.0 now supports Kinet v3 protocol and FlexElite luminaires.

Improved CSV Import/Export Function

Quick batch editing of properties like DMX address, IP address, and name.

Updated Effects

New Color/White Picker and Custom Rainbow effect added.

Enhanced Device Selection

Multi-Select devices for configuration and light output.

2 System Requirements

Verify that your computer meets the following minimum specifications:

Windows	Windows 10 or newer, 64-bit 100 MB free storage space	macOS	macOS 10.10 or newer 100 MB free storage space
---------	--	-------	---

3 Configure Static IP Address

Connect your computer directly to a lighting network Ethernet switch and disable any firewalls. By default, Ethernet devices from Color Kinetics are assigned an IP address in the 10.x.x.x range. To ensure that your computer can communicate with these devices, configure your computer with a static IP address of 10.1.2.3 and with the Subnet Mask of 255.0.0.0.

Static IP Address Configuration for Windows®

1. From the Start menu, select **Control Panel**, and then click **Network and Internet**.
2. Under **Network and Sharing Center** click **View network status and tasks**.
3. Under your Private network click the **Ethernet** link, then click **Properties**.
4. Select **Internet Protocol (TCP/IP v4)**, then click **Properties**.
5. Configure a static IP address:
 - Select **Use the following IP address**.
 - Enter 10.1.2.3 for the **IP Address**.
 - Enter 255.0.0.0 for the **Subnet Mask**.
6. Click **OK** to return to the Local Area Connection Status window, and then click **Close**.

Static IP Address Configuration for macOS

1. From the Apple menu or the Dock, open **System Preferences**, and then click **Network**.
2. From the **Location** list, select **Automatic**.
3. Select your Ethernet device from the left pane.
4. Configure a static IP address:
 - From the **Configure IPv4** list, select **Manually**.
 - Enter 10.1.2.3 for the **IP Address**.
 - Enter 255.0.0.0 for the **Subnet Mask**.
5. Click **Apply**.

4 Using QuickPlay Pro 2.0

Discovering Ethernet Devices

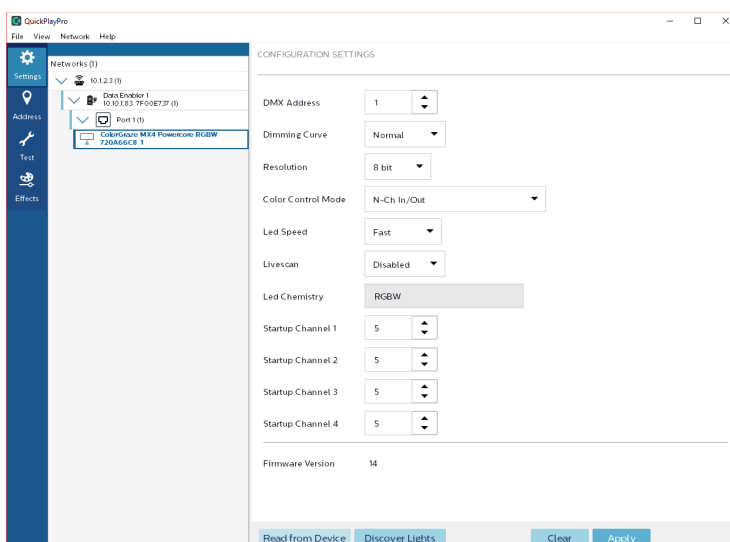
QuickPlay Pro 2.0 will detect all connected Ethernet devices when it is launched. You can switch Ethernet interfaces in the **Network** pulldown menu bar.

Discovering Fixtures

To discover fixtures, right-click a specific PDS or Data Enabler Pro and select **Discover Lights**. Multiple Ethernet devices can be selected by using **Shift**, **Ctrl**, or **Ctrl + A**.

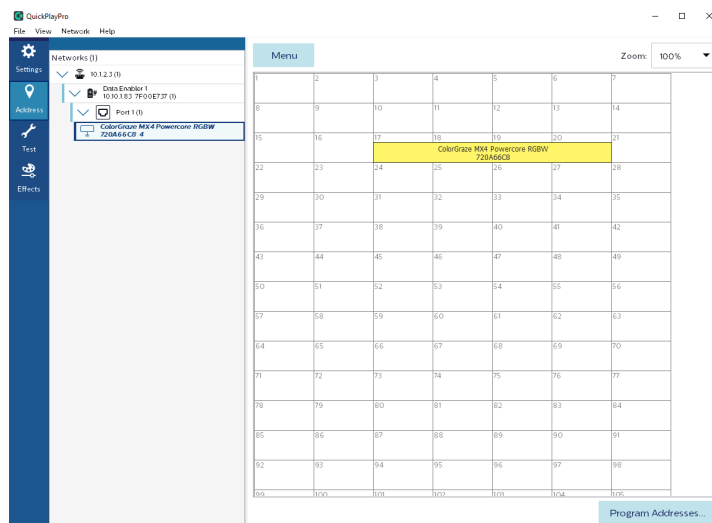
Settings

Configure settings on selected devices and fixtures. If multiple devices are selected, common properties can be configured.



Address

Address fixtures in selected universe by dragging them to the DMX grid and clicking program. Fixtures will illuminate when selected.



Test

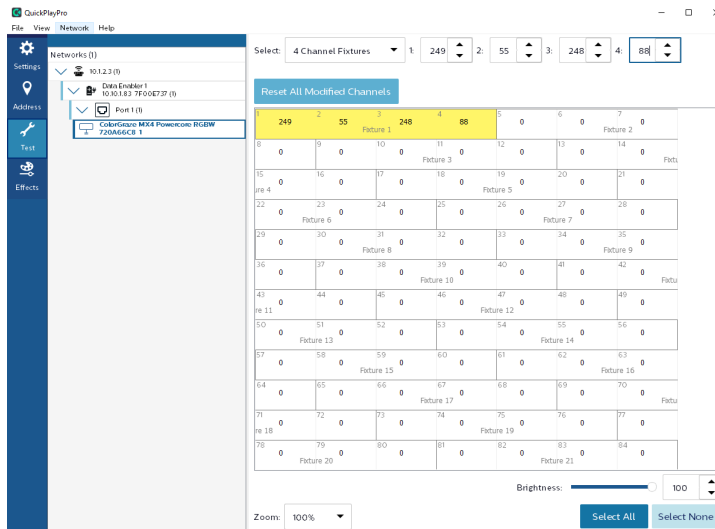
Send individual DMX channel values out to the selected universes. Useful for testing and commissioning.

Double click on a single channel to override its value.

Set the number of channels in your selection as well as the values for each channel at the top of the window.

Use the mouse or the arrow keys to move through the universe.

Shift can be used to multi-select channels.

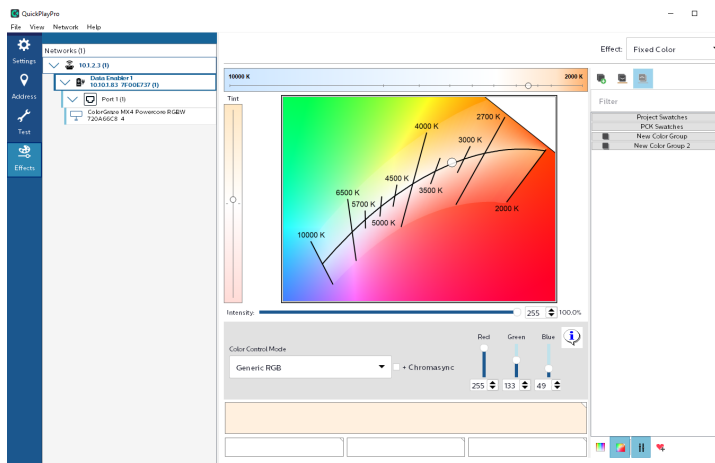


Effects

Output Fixed Color, Custom Rainbow, Sweep, or Streak Effects to selected fixtures.

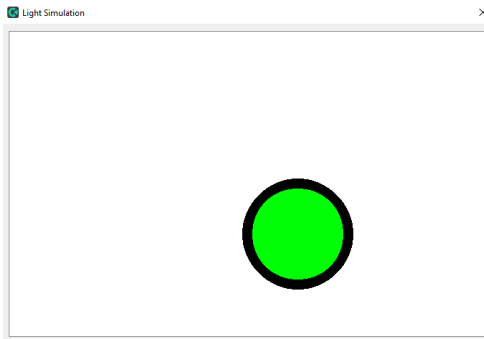
Dial in and save colors for future use.

Use the White Picker to select CCTs on and around the black body curve.



Simulation

View a simulation of the color output going to your fixtures on your computer's monitor



CSV Import/Export

Export all (or selected) devices to a .csv file containing their name, Serial Number, DMX Address, and IP address. You can edit this file in a spreadsheet editor to change these values.

When you import a .csv file, the values in the file will be programmed to the devices on the network. (Note: Properties key off of the device's serial number).

Names and IP addresses can be edited for Ethernet devices like Data Enabler Pro and Accent Powercore using csv import. DMX address can be edited for compatible Powercore and low voltage fixtures.

Create Lighting Profile

Save a lighting profile for use with ActiveSite/Interact Landmark.

Keyboard Shortcuts

Alt + E: Discover Ethernet Devices on selected network

Alt + L: Discover Fixtures on selected Ethernet devices

Alt + D: Read properties from current device

Ctrl + A: Select All