

# Graze Compact Symmetric Louver

Date: \_\_\_\_\_

Type: \_\_\_\_\_

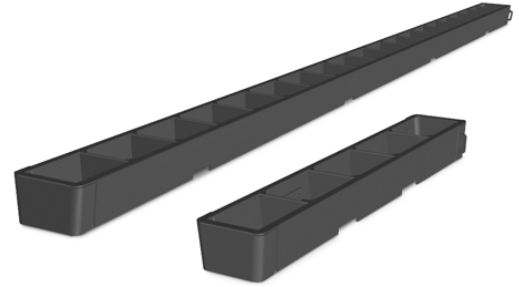
Firm Name: \_\_\_\_\_

Project: \_\_\_\_\_

609 mm, 2 ft

## Louver specifically designed for Graze Compact luminaires

The Graze Compact Louver controls unwanted spill light from a luminaire. Available in four lengths.



- Mitigate Spill Light—Controls spill light like a masking shield, but with a fraction of the depth.
- Design Flexibility—Available in four standard lengths: 305 mm (1 ft), 610 mm (24 in), 914 mm (36 in), 1219 mm (48 in) designed to accommodate all four available lengths of Graze Compact luminaires.

For detailed product information, please refer to the Product Guide at <https://www.colorkinetics.com/global/graze>

# Specifications

Due to continuous improvements and innovations, specifications may change without notice.

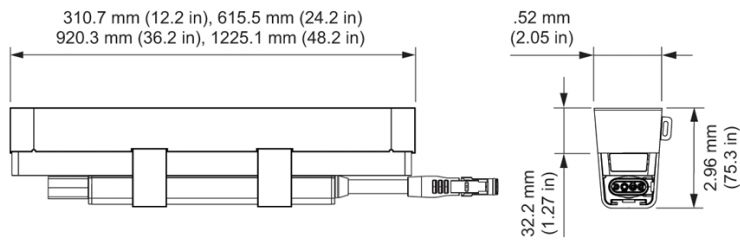
## Physical

Dimensions	615.5 x 32.2 x .52 mm (24.2 x 1.27 x 2.05 in)
Weight (Height x Width x Depth)	0.17 kg (0.37 lb)
Housing	Aluminium
Finish	gray powder-coated finish

## Certification and Safety

Environment	Dry/Damp/Wet Location
-------------	-----------------------

## Dimensions



# Part Numbers

Use Item Number when ordering in North America.

Accessory	Item Number	Item 12NC
Graze Compact Symmetric Louver, 609 mm, 2 ft	120-000207-01	912400136649



© 2022 Signify Holding. All rights reserved. Specifications are subject to change without notice. No representation or warranty as to the accuracy or completeness of the information included herein is given and any liability for any action in reliance thereon is disclaimed.

Color Kinetics  
<https://www.colorkinetics.com/global/graze>