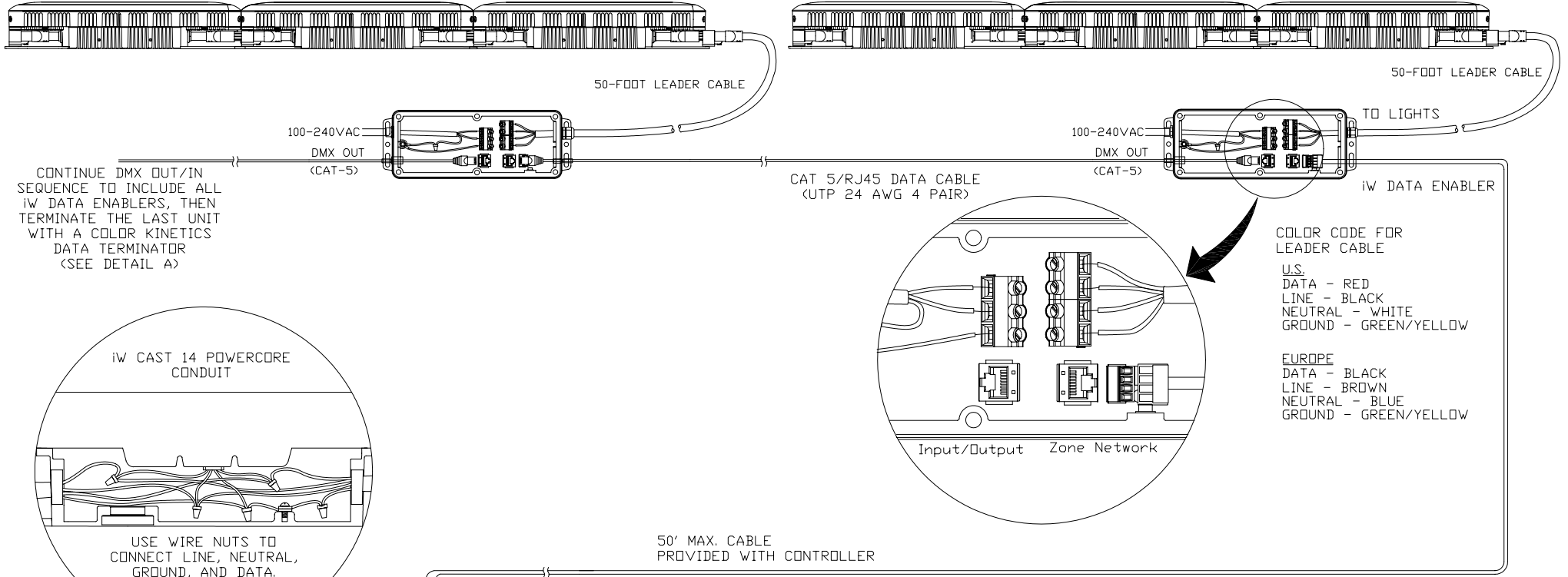


MAXIMUM LIGHTS PER IW DATA ENABLER: 36 @ 120VAC, 58 @ 220VAC, 61 @ 240 VAC

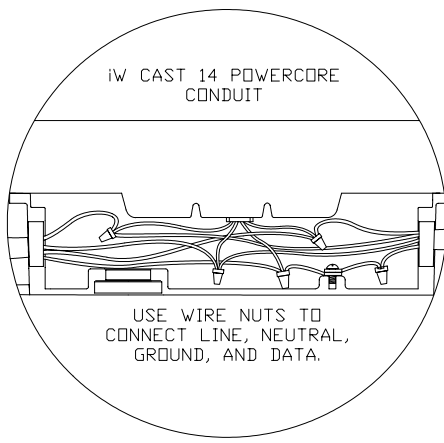
MAXIMUM LIGHTS PER IW DATA ENABLER: 36 @ 120VAC, 58 @ 220VAC, 61 @ 240 VAC

END-TO-END CONNECTION

END-TO-END CONNECTION

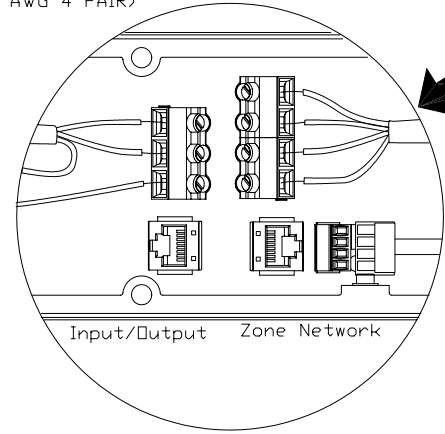


CONTINUE DMX OUT/IN SEQUENCE TO INCLUDE ALL IW DATA ENABLERS, THEN TERMINATE THE LAST UNIT WITH A COLOR KINETICS DATA TERMINATOR (SEE DETAIL A)



USE WIRE NUTS TO CONNECT LINE, NEUTRAL, GROUND, AND DATA.

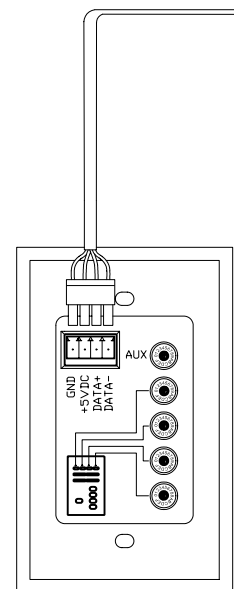
SEE IW CAST 14 POWERCORE CONDUIT INSTALLATION GUIDE FOR COMPLETE DETAILS.



COLOR CODE FOR LEADER CABLE

U.S.
 DATA - RED
 LINE - BLACK
 NEUTRAL - WHITE
 GROUND - GREEN/YELLOW

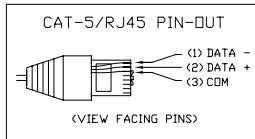
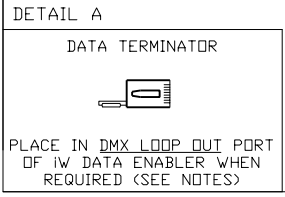
EUROPE
 DATA - BLACK
 LINE - BROWN
 NEUTRAL - BLUE
 GROUND - GREEN/YELLOW



iw SCENE CONTROLLER (BACK)

NOTE:

- PLACE A DATA TERMINATOR IN THE DMX LOOP OUT PORT OF THE LAST DATA ENABLER IN THE CHAIN.
- TO CALCULATE THE NUMBER OF FIXTURES PER IW DATA ENABLER FOR YOUR CUSTOMIZED INSTALLATION, REFER TO THE CONFIGURATION CALCULATOR LOCATED AT WWW.COLORKINETICS.COM/SUPPORT/INSTALL_TOOL
- PLACE AN END CAP ON THE OUTPUT CONNECTOR OF THE LAST FIXTURE IN THE CHAIN



COLOR KINETICS INCORPORATED
 10 MILK STREET, SUITE 1100
 BOSTON, MA 02108
 888 FULL RGB
 617 423 9999
WWW.COLORKINETICS.COM

"FULL SPECTRUM DIGITAL LIGHTING"

TITLE: SYSTEM WIRING DIAGRAM (TYP)	DATE: 1-17-2005
PRODUCTS: iw CAST 14, iw CAST 14 CONDUIT/DATA ENABLER/IW SCENE CONTROLLER	DWG. BY: BT PR
	SCALE: NTS
	REV:
	PAGE: 1 OF 1