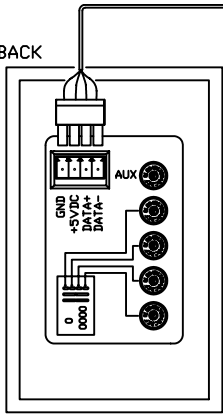


IW PROFILE FIXTURES
 MAX. 4 PER IW PDS-60
 MAX. 2 PER RUN

IW PROFILE FIXTURES
 MAX. 4 PER IW PDS-60
 MAX. 2 PER RUN

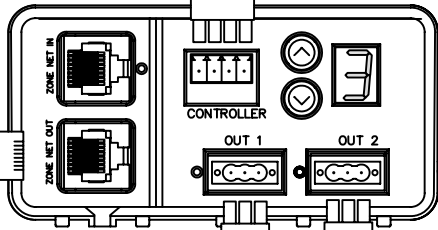


IW SCENE
 CONTROLLER BACK



SCENE
 CONTROLLER
 IN

DATA OUT

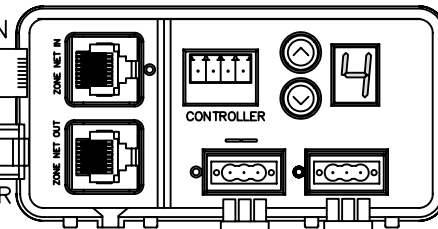


RED
WHITE
BLACK

RED
WHITE
BLACK

50' IW PROFILE LEADER CABLE REQUIRED
 (SEE NOTES BELOW FOR DETAILS)

DATA IN
 ZONE NET IN
 ZONE NET OUT
 TERMINATOR



RED
WHITE
BLACK

RED
WHITE
BLACK

OUT TO NEXT RUN(S) OF
 IW PROFILE FIXTURES

DETAIL A

DATA TERMINATOR



PLACE IN ZONE NET OUT PORT
 OF POWER/DATA SUPPLY WHEN
 REQUIRED (SEE NOTES)

- NOTE:
- LIMIT RUN TO 32 IW PDS UNITS
 - INSERT DATA TERMINATOR IN THE ZONE NET OUT PORT WHEN SUPPLY AT THE END OF A RUN DOES NOT USE A SCENE CONTROLLER

CAT-5/RJ45 PIN-OUT



(VIEW FACING PINS)

(1) DATA -
 (2) DATA +
 (3) COM



COLOR KINETICS INCORPORATED
 10 MILK STREET, SUITE 1100
 BOSTON, MA 02108
 888 FULL RGB
 617 423 9999
 WWW.COLORKINETICS.COM

FULL SPECTRUM DIGITAL LIGHTING

TITLE:
 SYSTEM WIRING DIAGRAM (TYP)

PRODUCTS:
 IW PROFILE / IW PDS-60 /
 IW SCENE CONTROLLER

DATE: 6-27-2005

DWG. BY: MJ

SCALE: NTS

REV:

PAGE: 1 OF 1