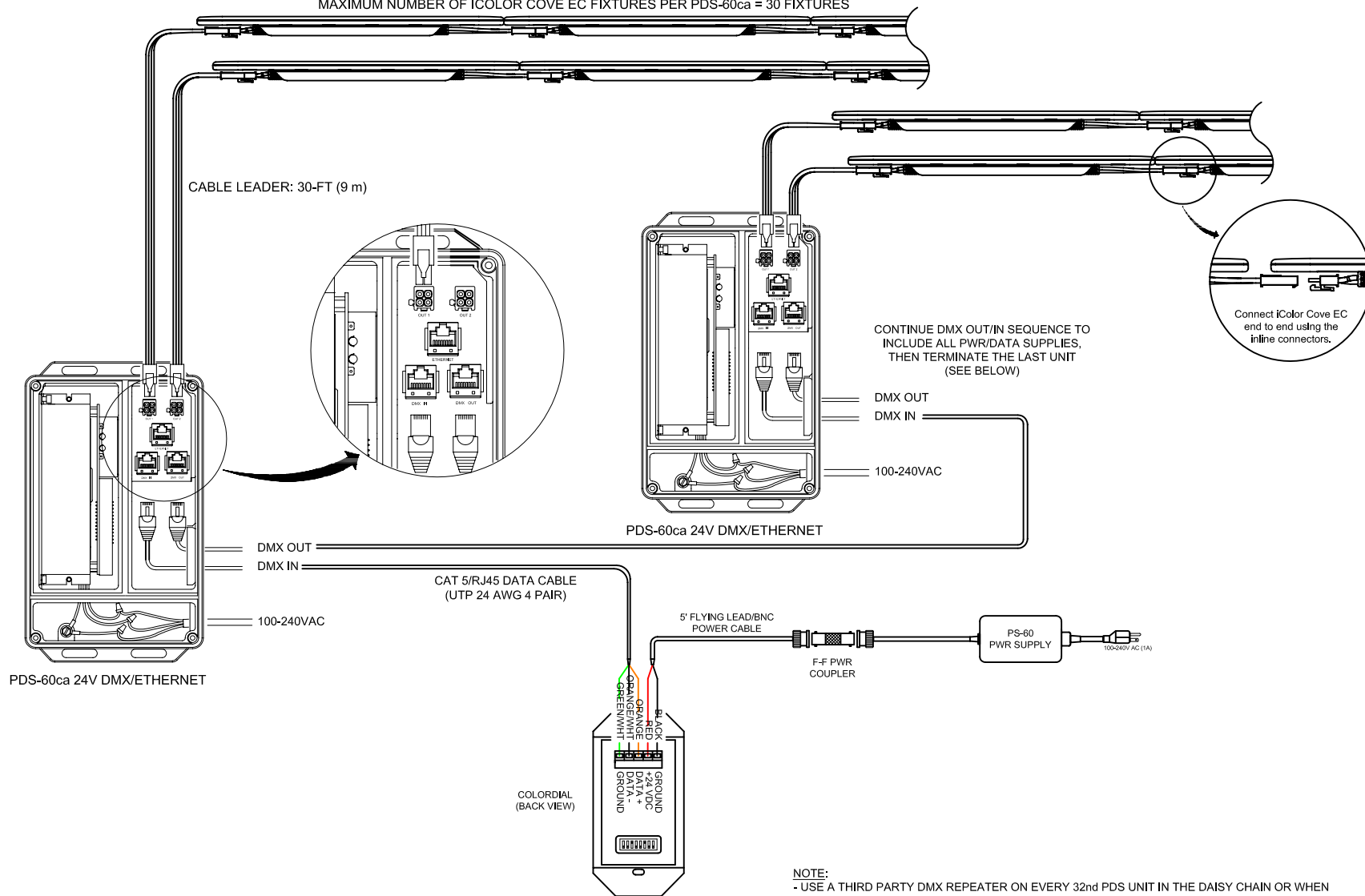


MAXIMUM NUMBER OF ICOLOR COVE EC FIXTURES PER PDS-60ca = 30 FIXTURES



- NOTE:**
- USE A THIRD PARTY DMX REPEATER ON EVERY 32nd PDS UNIT IN THE DAISY CHAIN OR WHEN THE TOTAL DMX DATA RUN EXCEEDS 1000 FEET (300m). REFER TO THE "RECOMMENDED PRACTICES FOR DMX512" FOR FURTHER INFORMATION REGARDING INSTALLATIONS UTILIZING DMX512. CONTACT TECHNICAL SUPPORT FOR RECOMMENDED THIRD PARTY DMX REPEATERS.
 - PLACE A DATA TERMINATOR IN THE DMX LOOP OUT PORT OF THE LAST PDS UNIT IN THE DAISY-CHAIN.
 - MAXIMUM NUMBER OF LIGHTS PER PDS-60ca: 30 (ALL ON ONE OUTPUT OR DIVIDED BETWEEN THE TWO OUTPUTS).
 - DO NOT SHORTEN OR LENGTHEN LEADER CABLE. CUTTING THE LEADER CABLE WILL DAMAGE THE DATA DRIVE CIRCUITRY.
 - WHEN USING 1-FT JUMPER CABLES CONTACT APPLICATION ENGINEERING FOR RUN LIMITATIONS.



COPYRIGHT © 2007 PHILIPS SOLID-STATE LIGHTING SOLUTIONS. ALL RIGHTS RESERVED. CHROMACORE, CHROMASCAP, CIE, THE CIE LOGO, COLOR KINETICS, THE COLOR KINETICS LOGO, COLOR KINETICS THE LEADER IN INTELLIGENT LIGHT, COLORMAST, COLORBASE, COLORMIST, COLORSCAPE, COLORWAY, COLORSCAPE, DIMAND, DIRECT LIGHT, ESSENTIALWHITE, iW, ICOLOR, ICOLOR CORE, INTELLIWHITE, iW, iWAVE, LIGHT BENEATH, LIMES, OFIBIK, POWERCORE, OUTDRIP, iV, SAUCE, THE SAUCE LOGO, AND SMARTLICE ARE EITHER REGISTERED TRADEMARKS OR TRADEMARKS OF PHILIPS SOLID-STATE LIGHTING SOLUTIONS IN THE UNITED STATES AND/OR OTHER COUNTRIES. ALL OTHER BRAND OR PRODUCT NAMES ARE TRADEMARKS OR REGISTERED TRADEMARKS OF THEIR RESPECTIVE OWNERS.

DATA TERMINATOR



PLACE IN DMX LOOP OUT PORT OF POWER/DATA SUPPLY WHEN REQUIRED (SEE NOTES)

CAT5/RJ45 PINOUT



(VIEW FACING PINS)

TITLE:

SYSTEM WIRING DIAGRAM (TYP)

PRODUCTS:

iCOLOR COVE EC/PDS-60ca 24V/COLORDIAL/PS-60

DATE: 3-11-2008

DWG. BY: BHG

SCALE: NTS

REV:

PAGE: 1 OF 1