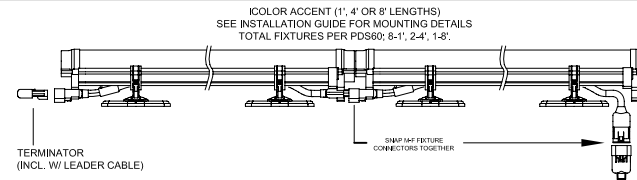
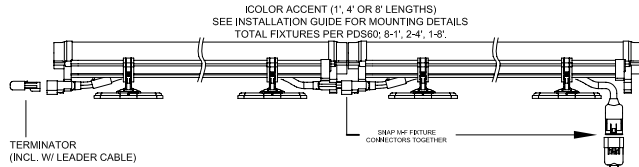
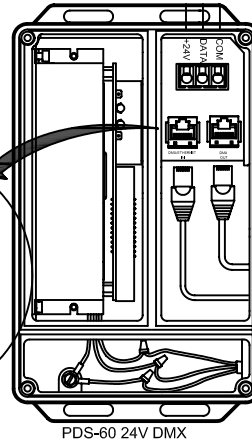
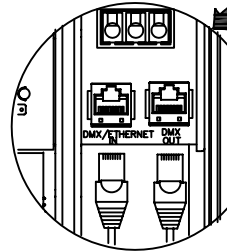
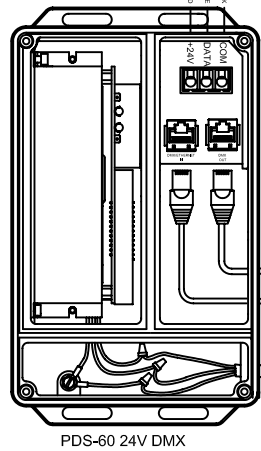


NOTES:

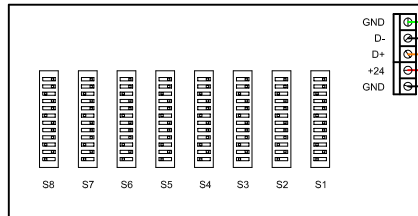
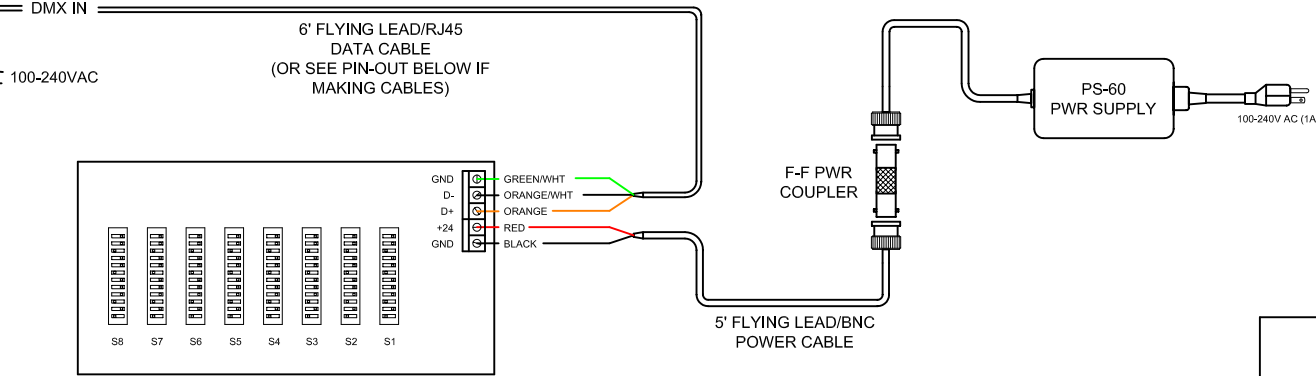
- EACH PDS-500s WILL SUPPORT 1 RUN OF ICOLOR ACCENT USING THE 50 FT. LEADER CABLES (SOLD SEPARATELY).
- EACH 50 FT. LEADER CABLE SUPPORTS A MAX. OF 8 LINEAR FT. OF ICOLOR ACCENT FIXTURES. FOR A TOTAL MAX. OF 8 L.F. PER PDS60 24V.
- TOTAL FIXTURES: 8- 1' ACCENT, 2- 4' ACCENT, 1- 8' ACCENT.
- USE A TERMINATOR (INCL. W/ LEADER CABLE) AT THE END OF EACH FIXTURE RUN.
- IF USING 1' JUMPER CABLES (SOLD SEPARATELY) YOU MUST SUBTRACT AND CUT TOTAL NUMBER USED FROM LEADER CABLE.



ICOLOR ACCENT 50 FT. LEADER CABLE (MAX. 1 PER PDS60 - DO NOT EXTEND)



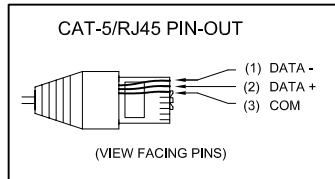
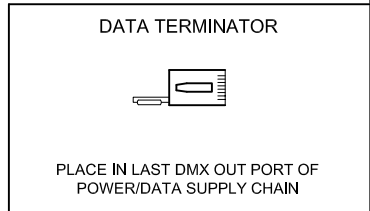
CONTINUE DMX OUT/IN SEQUENCE TO INCLUDE ALL PWR/DATA SUPPLIES, THEN TERMINATE THE LAST UNIT (SEE BELOW)



MULTISYNCHRONIZER (BACK VIEW)

NOTE:

- USE AN IN-LINE DMX REPEATER AFTER EVERY 16th PDS UNIT IN A CHAIN, OR WHEN A DATA CABLE RUN BETWEEN UNITS EXCEEDS 400 FEET.
- MAXIMUM NUMBER OF FIXTURES PER PDS-60: 8-1', 2-4', 1-8'



COLOR KINETICS INCORPORATED
 10 MILK STREET, SUITE 1100
 BOSTON, MA 02108
 888 FULL RGB
 617 423 9999
 WWW.COLORKINETICS.COM

"FULL SPECTRUM DIGITAL LIGHTING"

TITLE:	SYSTEM WIRING DIAGRAM (TYP)	DATE:	
PRODUCTS:	ACCENT / PDS-60 24V / MS / P60	DWG. BY:	S.D.
		SCALE:	NTS
		REV:	
		PAGE:	1 OF 1