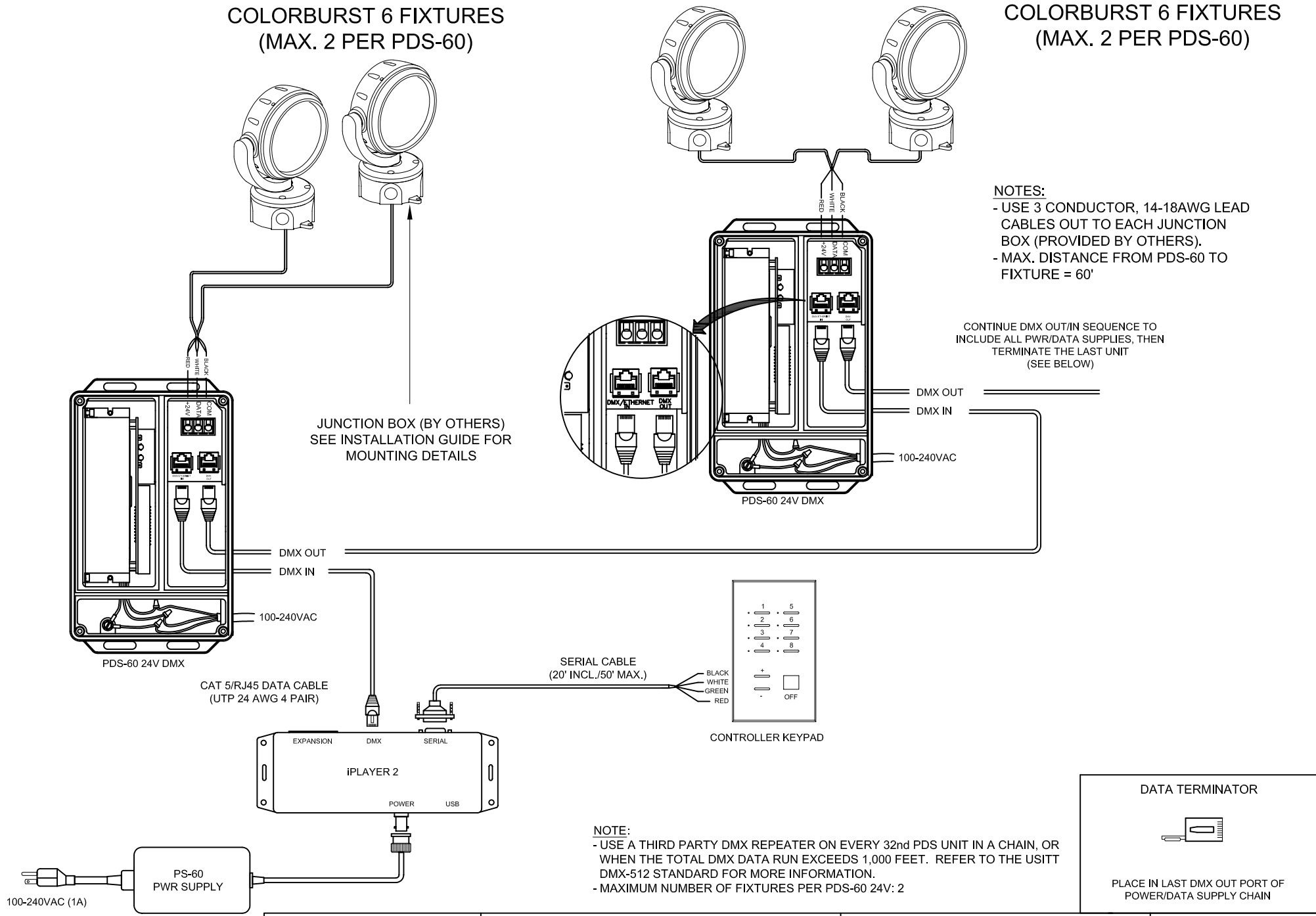


**COLORBURST 6 FIXTURES
(MAX. 2 PER PDS-60)**

**COLORBURST 6 FIXTURES
(MAX. 2 PER PDS-60)**



- NOTES:**
- USE 3 CONDUCTOR, 14-18AWG LEAD CABLES OUT TO EACH JUNCTION BOX (PROVIDED BY OTHERS).
 - MAX. DISTANCE FROM PDS-60 TO FIXTURE = 60'

CONTINUE DMX OUT/IN SEQUENCE TO INCLUDE ALL PWR/DATA SUPPLIES, THEN TERMINATE THE LAST UNIT (SEE BELOW)

- NOTE:**
- USE A THIRD PARTY DMX REPEATER ON EVERY 32nd PDS UNIT IN A CHAIN, OR WHEN THE TOTAL DMX DATA RUN EXCEEDS 1,000 FEET. REFER TO THE USITT DMX-512 STANDARD FOR MORE INFORMATION.
 - MAXIMUM NUMBER OF FIXTURES PER PDS-60 24V: 2

100-240VAC (1A) PS-60 PWR SUPPLY

CAT 5/RJ45 DATA CABLE (UTP 24 AWG 4 PAIR)

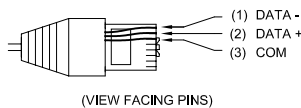
SERIAL CABLE (20' INCL./50' MAX.)

CONTROLLER KEYPAD

DATA TERMINATOR

PLACE IN LAST DMX OUT PORT OF POWER/DATA SUPPLY CHAIN

CAT-5/RJ45 PIN-OUT



COLOR KINETICS INCORPORATED
10 MILK STREET, SUITE 1100
BOSTON, MA 02108
888 FULL RGB
617 423 9999
WWW.COLORKINETICS.COM

"FULL SPECTRUM DIGITAL LIGHTING"

TITLE:

SYSTEM WIRING DIAGRAM (TYP)

PRODUCTS:

CBU6 / PDS-60 24V / iPlayer2 / PS60 / Controller Keypad

DATE:

DWG. BY: B.T.

SCALE: NTS

REV:

PAGE: 1 OF 1