



OneSpace Prefab

Rethink the ceiling

Product Family Guide



reddot award 2017
winner lighting design



DESIGN
AWARD
2017

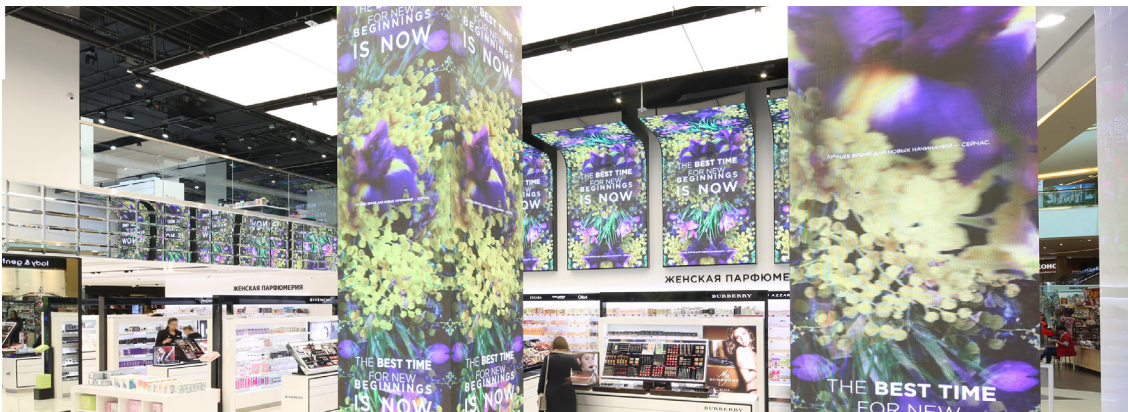
OneSpace – your vision

You asked us to rethink the ceiling, so we did. Now it is a blank canvas awaiting your vision. Our revolutionary OneSpace Prefab is a modular panel that liberates you from the constraints of conventional ceiling design so you are free to pursue uncluttered minimalist visions – and transform any interior into one cohesive space with beautiful homogeneous light.



OneSpace Prefab enhances the perception of people in public spaces by delivering improved acoustics and a superior daylight experience.

“The ceiling becomes the light, the light becomes the ceiling”



Superior homogeneous light

OneSpace Prefab integrates LED lights with textile to create a white light ceiling surface that hides the source of light completely. It delivers excellent uniform light distribution for an enhanced daylight experience, which makes it a perfect functional light for any interior. The result is a smooth and clutter-free ceiling of homogeneous light that feels as good as it looks.

Choice of color temperatures

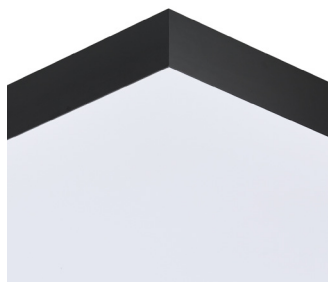
To make it even more versatile, OneSpace Prefab is available in 3000 K and 4000 K versions, as well as a tunable white version ranging from 2700 K to 6500 K. So you can tailor the light exactly to your needs.

Liberating design possibilities

OneSpace Prefab opens up new minimalistic design opportunities and transforms any ceiling into a serene and calm space. For design flexibility the thin, compact units are based on a modular system with a minimum dimension of 900 x 900 mm (3 x 4 ft for US) and a maximum dimension of 1,800 x 3,000 mm (6 x 10 ft). There is also the option to choose the color of the edge of the panel.



OneSpace Prefab is ideal for showcasing hero products in their true light as it delivers uniform, shadow-free illumination.



The compact units blend absolutely into a minimalist.



E-box mounted to the back.

Simply smarter

The ceiling-mounted panels (assembly in factory) are simple to install and easy to maintain. They also integrate perfectly with your building management system.

Sensory enhancing

OneSpace Prefab not only makes spaces look great, it enhances your experience of them. It delivers bright, uniform glare-free light that eliminates shadows completely, so you can see more clearly and view objects in their true light. It even enhances room acoustics by reducing disturbing sound reflections.

Supremely safe

OneSpace Prefab combines class-leading features and competitive pricing to offer excellent value. It also exceeds industry safety standards for both fire and mounting. The ceiling panels have a B-s2 safety rating, and the fabric a B-s1 safety rating.

Rethink your next ceiling design at:
www.colorkinetics.com/onespace

Specifications

Due to continuous improvements and innovations, specifications may change without notice.

OneSpace Prefab

General characteristics

Light level at 100% (for 4000 K version)

Europe	3,200 lm/m ²
United States	Typical 300 lm/ft ² (300 FC)
CCT LED Color: single color	3000 K, 4000 K
tunable white	2700 to 6500 K
Range depends on dimension and power setting	
Color rendering index	> 88
	R9 > 35
Maintenance factor L70	50,000 hours
Dimming	Between 10% and 100%
Acoustic properties	α_w 0.6 class C EN 11654
	α_w 0.8 class in speech area
Noise Reduction Coefficient	NRC 0.6 ASTM C423 – 99
	NRC 0.85 in speech area

Product characteristics

Ceiling panel

Luminaire type	Non-user replaceable light source
Thickness	140 mm (5.5 in) total height
	120 mm (4.7 in) frame height
	<i>Thickness excludes mounting and hoisting parts</i>
Front material	Polyester
Frame edge color	Matte black (standard)
	Matte white (optional)

E-box

Dimensions	205 mm x 540 mm (8.1 in x 21.3 in)
Thickness	30 mm (1.2 in)
Contains	Drivers and terminal block
Use	Only for use with OneSpace Prefab (default mounted on the back of the panel)

The light engine (LED module) is an integrated component of this OneSpace Prefab, and may not be used as a stand-alone light engine. It is only suitable for connection to a SELV driver.

* The CE version of this OneSpace Prefab is certified as a centrally supplied emergency luminaire according to IEC60598-2-22. The OneSpace prefab should be supplied with a suitable DC voltage (200 to 250 Vdc) in order to changeover to emergency luminaire function. In this state, the panel generates a total light output of at least 120 lm for the smallest size.



Range of available sizes (mm)

	Width	900	1,200	1,500	1,800
Height					
900		✓			
1,200		✓	✓		
1,600		✓	✓	✓	
1,800		✓	✓	✓	✓
2,100		✓	✓	✓	✓
2,400		✓	✓	✓	✓
2,700		✓	✓	✓	✓
3,000		✓	✓	✓	✓

Range of available sizes (ft)

	Width	3	4	5	6
Height					
4		✓	✓		
5		✓	✓	✓	
6		✓	✓	✓	✓
7		✓	✓	✓	✓
8		✓	✓	✓	✓
9		✓	✓	✓	✓
10		✓	✓	✓	✓

Control interface

Europe	DALI (Digital Addressable Lighting Interface)
United States	DALI or 0-10 V

Input voltage / power

Europe (CE)	220 to 240 Vac / 50 to 60 Hz
United States / Canada (UL)	120 to 277 Vac / 50 to 60 Hz

Temperature characteristics

Ambient temperature	5 to 35 °C (41 to 95 °F)
Relative humidity	< 95% non-condensing

Approbation / compliance

Fire rating

Europe	Fabric (EN 13501) B-s1, d0
	Panel (EN 13501) B-s2, d0
United States	UL723 (ASTM E84)

Emergency Lighting

Europe: centrally supplied emergency luminaire	IEC60598-2-22*
--	----------------

Approbation

Europe	CE
United States / Canada	UL and c-UL listed

OneSpace Prefab accessories (not included)

Accessories	12 NC order number	Pieces in one set	Required sets per panel
Mounting Kit Wire CE	9137 052 00075	4	1
Mounting Kit Wire UL	9137 052 00076	4	1
Mounting Kit Magnet (CE, UL)	9137 052 00152	2	2 to 4 (depending on panel size)

Ordering information

For more information visit www.colorkinetics.com/onespace



© 2020 Signify Holding. All rights reserved. The information provided herein is subject to change, without notice. Signify does not give any representation or warranty as to the accuracy or completeness of the information included herein and shall not be liable for any action in reliance thereon. The information presented in this document is not intended as any commercial offer and does not form part of any quotation or contract, unless otherwise agreed by Signify.

All trademarks are owned by Signify Holding or their respective owners.

Color Kinetics
www.colorkinetics.com/onespace